



# A Woman's Place 2012-2013 ANNUAL REPORT



### August 2012

AWP holds the first Peace Works Camp – a day camp for students in kindergarten thru 6th grade that incorporates activities on positive self-esteem and healthy friendships.

### December 2012

Ifeoma U. Aduba is named AWP Executive Director following the retirement of Donna J. Byrne.



### March 2013

Donna J. Byrne, AWP's former Executive Director, receives the Bucks County Women's History Month Award for the work she has done to make the lives of women and girls better in the community.



### March 2013

AWP's Emergency Shelter reopens after a three month lead abatement procedure.

2012

JUL

AUG

SEPT

OCT

NOV

DEC

JAN

FEB

MAR

APR

MAY

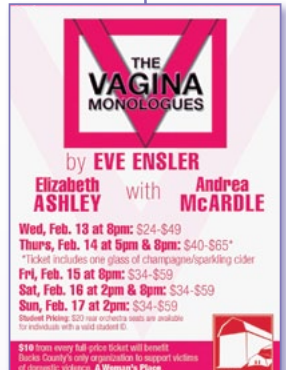
JUN

2013



### November 2012

AWP's Emergency Shelter closes to undergo a lead abatement process and to replace windows, doors, and carpeting to ensure safety and comfort for those who stay there.



### February 2013

The Bucks County Playhouse hosts Eve Ensler's *The Vagina Monologues* starring Andrea McArdle. A portion of each ticket is donated to AWP.



### May 2013

AWP officially adopts new mission, vision, and values statements during the Annual Meeting after a year-long process that included discussions and brainstorming with staff, board members, and volunteers.



# A Woman's Place Statement of Financial Position June 30, 2013

## ASSETS

### Current Assets

Cash	\$ 76,597
Cash - agency funds	10,524
Investments	
Certificates of deposit, current	50,706
Mutual funds	428,366
Grants and accounts receivable	75,083
Prepaid expenses	29,205
Inventory	16,261
<b>Total Current Assets</b>	<b>686,742</b>
Long-term investments: Certificates of deposit	151,320
Fixed assets, net of accumulated depreciation	72,097

**TOTAL ASSETS \$ 910,159**

## LIABILITIES AND NET ASSETS

### Current Liabilities

Accounts payable	\$ 16,262
Accrued payroll	75,968
Accrued expense	8,687
Funds held in agency	10,524

**Total Liabilities \$ 111,441**

### Net Assets

Unrestricted	
Board designated	100,000
Undesignated	698,718

**Total Unrestricted 798,718**

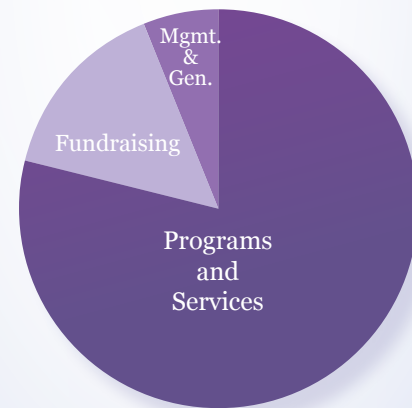
Temporarily restricted	—
------------------------	---

**Total Net Assets \$ 198,718**

**TOTAL LIABILITIES AND NET ASSETS \$ 910,159**

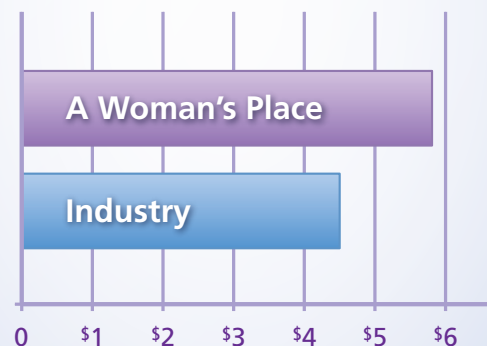
## Program Efficiency

During Fiscal Year 2013, total expenses for A Woman's Place (AWP) were \$2,264,454. Of these expenses, \$1,739,925 (77%) was used to fund programs and services. \$318,979 (14%) supported fundraising initiatives and AWP's thrift store. \$205,550 (9%) supported management and other general operating expenses.



## Fundraising Efficiency

For every \$1 spent on fundraising, A Woman's Place (AWP) was able to generate \$5.79 in revenue. AWP has higher return on investment than the industry standard, which is revenue of \$4.50 for every \$1 spent on fundraising.



## The Prevention Project

On average, each year AWP spends 641 hours providing general education in the community, 481 hours delivering school-based programs, and 113 hours training local medical professionals. An average of 6,233 students, 2,197 medical professionals, and 8,536 community members receive education and training services. In addition, AWP trains an average of 184 adult and teen volunteers each year.

Prevention education builds the community's capacity to respond to and prevent violence by replacing attitudes, beliefs, and behaviors that perpetuate violence with those that promote safety, justice, and equality for all. Programs can be tailored to meet specific needs and requirements.

### Programs include:

- ✓ Elementary, Middle, and High School Programs
- ✓ Workplace Violence Programs
- ✓ Training for Healthcare Providers
- ✓ Training for Educators and Groups
- ✓ Training for Service Providers
- ✓ Training for Faith Community Professionals
- ✓ Training for Community Members

## Services offered through AWP include:

- ✓ 24-Hour Hotline
- ✓ Information and Referrals
- ✓ Emergency Residential Shelter
- ✓ Transitional Housing
- ✓ County-wide Crisis Response
- ✓ Individual Counseling
- ✓ Group Counseling
- ✓ Child & Family Counseling
- ✓ Legal Options
- ✓ Assistance in Filing Protection from Abuse Orders
- ✓ Court Accompaniment
- ✓ 24-Hour On-Scene Response
- ✓ Civil Legal Representation

## The Safe Options Project

On average, each year AWP provides a total of 11,526 hours of counseling services to victims of domestic violence and their families. The organization sees an average of 3,020 services recipients annually: 2,804 adults, 192 significant others, and 108 children. The 24-hour hotline answers an average of 4,521 phone calls and provides an average of 1,507 hours of counseling and referral services. In addition, AWP provides Legal Advocacy and First Response services, which include legal options counseling, assistance filing for Protection from Abuse Orders (PFAs), and court accompaniment, to an average of 817 individuals each year. AWP's Legal Assistance program provides representation on an average of 157 cases annually.

A Woman's Place (AWP) offers services to victims of domestic violence and their children that provide them the opportunity to make choices and changes that will lead to safer and healthier living. Staff and volunteers provide them with necessary tools, resources, education, and support that will empower them to move from crisis to flourishing.

## The Empowerment Project

AWP is excited to announce the launch of The Empowerment Project in early 2014! The Empowerment Project was inspired by The Thursday Night Ladies writing group that was created in January 2012, and is AWP's next step to providing resources and support to help individuals flourish.

Clients of AWP and community members will join together to participate in programming that will acquire and increase the spiritual, social, educational, gender, and economic strength of themselves and communities. Programs within The Empowerment Project are customized for adults or teens, and are designed to facilitate the conditions that lead to individuals and communities that are flourishing.

### Programs include:

- ✓ Money Matters
- ✓ Love What You Do
- ✓ Writing Our Road to Flourishing
- ✓ Book Talks
- ✓ Leaning In at A Woman's Place
- ✓ Wellness Works





## ***Founding Mothers***

Doris Payne-Camp  
Beverly Frantz  
Pat Garrett  
MJ Kirkpatrick

## ***Board of Directors***

Kristin Ortlieb-Potts, *President*  
Frank Smith, *Vice President*  
Paul Murray, *Treasurer*  
Sue Walker, *Secretary*

Kathy Boockvar  
Stuart Bush  
Susan Dardes  
Joshua Goldblum  
Rose Hartle  
Christine Hasson  
Nancy Montvydas  
Rebecca Ortlieb  
Tamera Pugh  
Anita Scott

Ifeoma U. Aduba, *Executive Director*

## ***Staff***

Lisa Armstrong, *Volunteer & Membership Manager*  
Christina Baer, *Director of The Prevention Project*  
Jenny Bishop Kempf, *Resident Counseling Advocate*  
Liesbeth Bisschops, *Community Educator*  
Lisa Brutko, *Resident Counseling Advocate*  
Lauren Bucksner, *Managing Attorney*  
Ann Ciliberto, *Director of The Empowerment Project*  
Kelly Dwyer, *Resident Counseling Advocate*  
Rachel Eiche, *Fundraising Manager*  
Erika Flayer, *Counseling Manager*  
Lisa Friedman, *Community Counseling Advocate*  
Carol Gaughan, *Legal Advocacy Manager*  
Marisol Graham, *First Response Advocate*  
Diane Haines, *Paralegal*  
Jacalyn Hartzell, *Communications Manager*  
Christy Heine, *Data Manager*  
Carol Hugg, *Thrift Store Assistant Manager*  
Mildred Mendez, *Director of The Safe Options Project*  
Katie Moran, *First Response Advocate*  
Debbie Nugent, *Thrift Store Manager*  
Shannon O'Connor, *Community Educator*  
Kay Olson, *Resident Counseling Advocate*  
Neha Patil, *Resident Counseling Advocate*  
Inna Pavlova, *Community Counseling Advocate*  
Jenny Salisbury, *Director of Public Advocacy*  
Karen Schoeller, *Director of Administration*  
Ashli Servis, *Resident Counseling Advocate*  
Jen Storer, *Resident Counseling Advocate*  
Linda Thomas, *Director of Institutional Advocacy*  
Lisa Tucholski, *First Response Manager*  
Megan Woodruff, *Legal Advocate*

## ***Vision***

A Woman's Place envisions a society where all individuals are safe in their relationships and can flourish.

## ***Mission***

A Woman's Place is a community-based social change organization committed to the empowerment of women and to ending intimate and domestic violence for all.

## ***Values***

To accomplish our vision of a society where all individuals are safe and can flourish, the programs, services, and decision making at all levels of A Woman's Place are rooted in and guided by the following values:

**Courage:** A Woman's Place acts bravely and boldly, notwithstanding fear.

**Creativity:** A Woman's Place encourages the creation of meaningful new ideas, interpretations, and rules.

**Equality:** A Woman's Place believes each and every one of us must collaborate to create a new society based in equal power and rights.

**Integrity:** A Woman's Place is of sound moral character and adheres to ethical principles.

**Respect:** A Woman's Place is considerate and honors the worth and dignity of all beings and resources.

**Social Justice:** A Woman's Place analyzes structural social inequalities in order to promote justice.

---

**Administrative Office**  
**215.343.9241**

---

*Free, Private, and Confidential*

**24-hour hotline**

**1.800.220.8116**



*a Woman's Place*

*A community issue. A community organization.  
Community Change*

**awomansplace.org**

PO Box 299 • Doylestown, PA • 18901